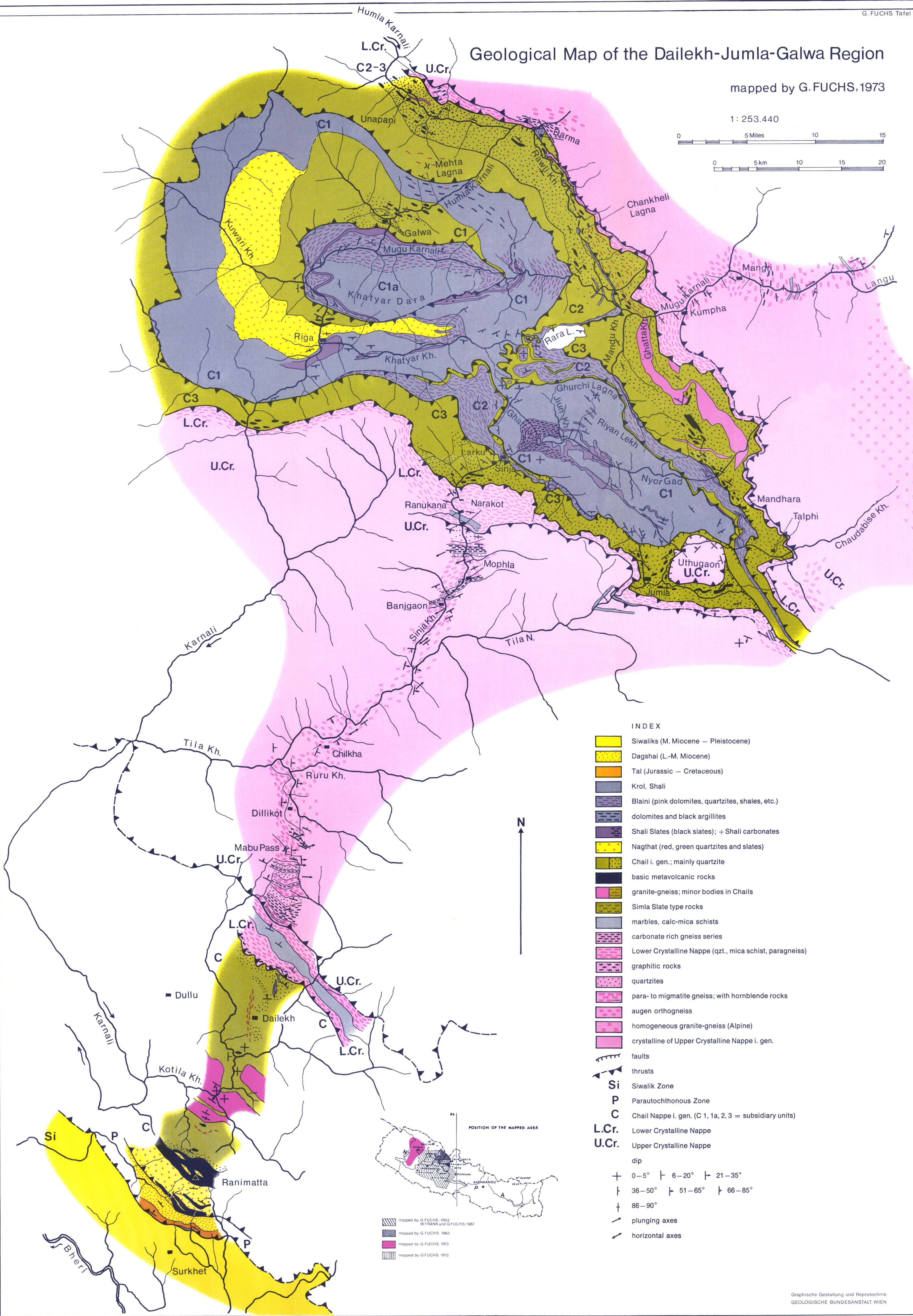
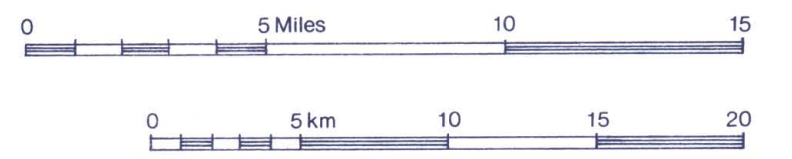


# Geological Map of the Dailekh-Jumla-Galwa Region

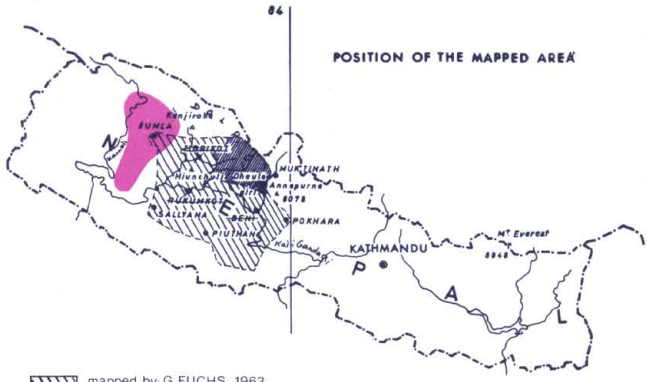
mapped by G. FUCHS, 1973

1 : 253.440



### INDEX

- Siwaliks (M. Miocene - Pleistocene)
- Dagshai (L.-M. Miocene)
- Tal (Jurassic - Cretaceous)
- Krol, Shali
- Blaini (pink dolomites, quartzites, shales, etc.)
- dolomites and black argillites
- Shali Slates (black slates); + Shali carbonates
- Nagthat (red, green quartzites and slates)
- Chail i. gen.; mainly quartzite
- basic metavolcanic rocks
- granite-gneiss; minor bodies in Chails
- Simla Slate type rocks
- marbles, calc-mica schists
- carbonate rich gneiss series
- Lower Crystalline Nappe (qzt., mica schist, paragneiss)
- graphitic rocks
- quartzites
- para- to migmatite gneiss; with hornblende rocks
- augen orthogneiss
- homogeneous granite-gneiss (Alpine)
- crystalline of Upper Crystalline Nappe i. gen.
- faults
- thrusts
- Si** Siwalik Zone
- P** Parautochthonous Zone
- C** Chail Nappe i. gen. (C 1, 1a, 2, 3 = subsidiary units)
- L.Cr.** Lower Crystalline Nappe
- U.Cr.** Upper Crystalline Nappe
- dip
- + 0-5° | 6-20° | 21-35°
- | 36-50° | 51-65° | 66-85°
- + 86-90°
- plunging axes
- horizontal axes



mapped by G. FUCHS, 1963  
 mapped by G. FUCHS, 1967  
 mapped by G. FUCHS, 1973  
 mapped by G. FUCHS, 1973